

IMAGINEA CASEI TALE

GLASSICO DESIGN TABLES

2024



CONTACT

0722.393.423
www.glassico.ro
www.fabrica-de-sticla.ro
office@oglinzisigeamuri.ro
Splaiul Unirii 975-977

COFFEE TABLES



MONTREUX COFFEE TABLE

MATERIAL TYPE: TEMPERED EUROGRAY GLASS

WIDTH: 600 - 1000MM
DEPTH: 600 - 1000MM
HEIGHT: 300 - 500MM
THICKNESS: 8MM

WIDTH: 900 - 1200MM
DEPTH: 400 - 600MM
HEIGHT: 300 - 500MM
THICKNESS: 8MM



MAZE COFFEE TABLE

MATERIAL TYPE: TEMPERED EUROGRAY GLASS

WIDTH: 600 - 1000MM
DEPTH: 600 - 1000MM
HEIGHT: 300 - 500MM
THICKNESS: 8MM

MECCA COFFEE TABLE

MATERIAL TYPE: TEMPERED EUROGRAY GLASS

WIDTH: 400 - 800MM
DEPTH: 400 - 800MM
HEIGHT: 400 - 800MM
THICKNESS: 8MM



COFFEE TABLE WITH SHELF

MATERIAL TYPE: TEMPERED EUROGRAY GLASS

WIDTH: 900 - 1200MM
DEPTH: 400 - 600MM
HEIGHT: 300 - 400MM
THICKNESS: 8MM

WIDTH: 600 - 1000MM
DEPTH: 600 - 1000MM
HEIGHT: 300 - 400MM
THICKNESS: 8MM

COFFEE TABLES

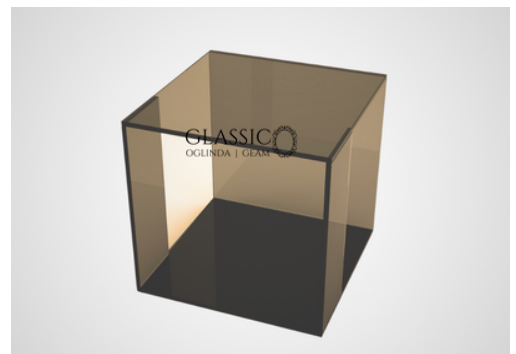
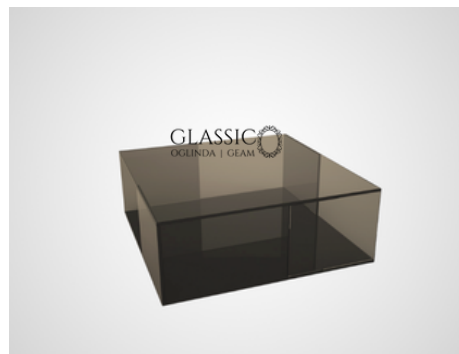


MONTREUX COFFEE TABLE

MATERIAL TYPE: TEMPERED EUROBRONZE GLASS

WIDTH: 600 - 1000MM
DEPTH: 600 - 1000MM
HEIGHT: 300 - 500MM
THICKNESS: 8MM

WIDTH: 900 - 1200MM
DEPTH: 400 - 600MM
HEIGHT: 300 - 500MM
THICKNESS: 8MM



MAZE COFFEE TABLE

MATERIAL TYPE: TEMPERED EUROBRONZE GLASS

WIDTH: 600 - 1000MM
DEPTH: 600 - 1000MM
HEIGHT: 300 - 500MM
THICKNESS: 8MM

MECCA COFFEE TABLE

MATERIAL TYPE: TEMPERED EUROBRONZE GLASS

WIDTH: 400 - 800MM
DEPTH: 400 - 800MM
HEIGHT: 400 - 800MM
THICKNESS: 8MM



COFFEE TABLE WITH SHELF

MATERIAL TYPE: TEMPERED EUROBRONZE GLASS

WIDTH: 900 - 1200MM
DEPTH: 400 - 600MM
HEIGHT: 300 - 400MM
THICKNESS: 8MM

WIDTH: 600 - 1000MM
DEPTH: 600 - 1000MM
HEIGHT: 300 - 400MM
THICKNESS: 8MM

SIDE TABLES



BERLIN SHELF

MATERIAL TYPE: TEMPERED EUROGRAY GLASS

WIDTH: 400 - 700MM
DEPTH: 400 - 700MM
HEIGHT: 400 - 800MM
THICKNESS: 8MM



DORTMUND SHELF

MATERIAL TYPE: TEMPERED EUROGRAY GLASS

WIDTH: 400 - 700MM
DEPTH: 400 - 700MM
HEIGHT: 400 - 800MM
THICKNESS: 8MM



LYON SHELF

MATERIAL TYPE: TEMPERED GLASS

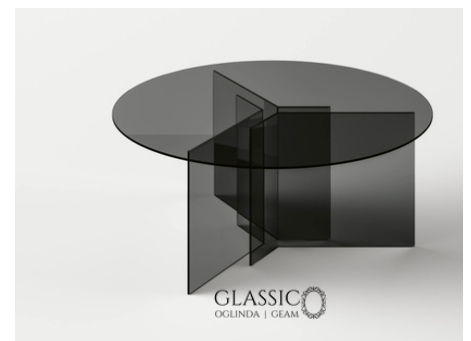
WIDTH: 400 - 700MM
DEPTH: 400 - 700MM
HEIGHT: 400 - 800MM
THICKNESS: 8MM



BELGRAD SHELF

MATERIAL TYPE: TEMPERED GLASS

WIDTH: 400 - 700MM
DEPTH: 400 - 700MM
HEIGHT: 400 - 800MM
THICKNESS: 8MM



CASABLANCA TABLE

MATERIAL TYPE: TEMPERED EUROGRAY GLASS

DIA: 600 - 1000MM
HEIGHT: 400 - 700MM
THICKNESS: 8MM



BEVELLED VENICE TABLE

MATERIAL TYPE: TEMPERED CLEAR GLASS

WIDTH: 600 - 1000MM
DEPTH: 600 - 1000MM
HEIGHT: 300 - 500MM
THICKNESS: 8MM



WIDTH: 900 - 1200MM
DEPTH: 400 - 600MM
HEIGHT: 300 - 500MM
THICKNESS: 8MM

DESKS & TABLES



ZURICH DESK



MATERIAL TYPE: TEMPERED CLEAR GLASS

WIDTH: 900 - 2000MM
DEPTH: 600 - 900MM
HEIGHT: 650 - 800MM
THICKNESS: 10MM



PARIS TABLE

MATERIAL TYPE: TEMPERED EUROGRAY GLASS

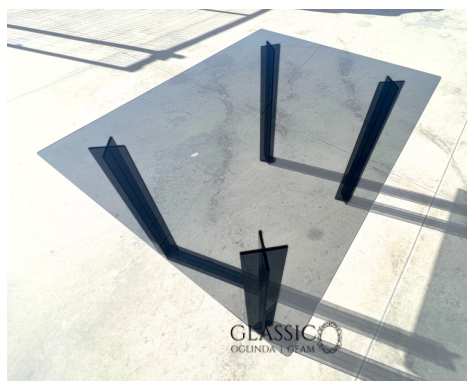
WIDTH: 900 - 1600MM
DEPTH: 600 - 900MM
HEIGHT: 700 - 800 MM
THICKNESS: 8MM



GRAND-PRIX TABLE

MATERIAL TYPE: TEMPERED EUROGRAY GLASS

WIDTH: 900 - 1200MM
DEPTH: 400 - 600MM
HEIGHT: 300 - 400MM
THICKNESS: 8MM



LEYSIN TABLE

MATERIAL TYPE: TEMPERED EUROGRAY GLASS

WIDTH: 900 - 1200MM
DEPTH: 400 - 600MM
HEIGHT: 300 - 400MM
THICKNESS: 8MM



OSLO TABLE

MATERIAL TYPE: TEMPERED CLEAR GLASS

WIDTH: 900 - 2000MM
DEPTH: 500 - 900MM
HEIGHT: 600 - 800MM
THICKNESS: 10MM



SWISS VAULT TABLE

MATERIAL TYPE: TEMPERED CLEAR GLASS

WIDTH: 900 - 2000MM
DEPTH: 500 - 900MM
HEIGHT: 600 - 800MM
THICKNESS: 10MM & 8MM



MILAN TABLE

MATERIAL TYPE: TEMPERED EUROGRAY GLASS

WIDTH: 900 - 1200MM
DEPTH: 400 - 600MM
HEIGHT: 300 - 400MM
THICKNESS: 8MM

SIDE TABLES



BERLIN SHELF

MATERIAL TYPE: TEMPERED EUROBRONZE GLASS

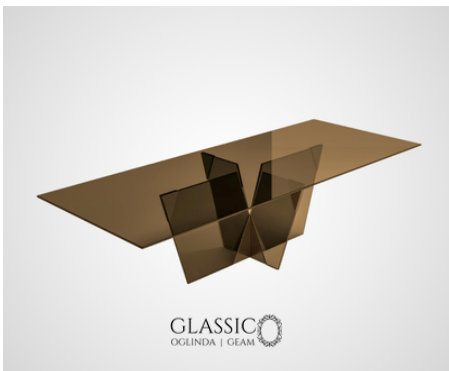
WIDTH: 400 - 700MM
DEPTH: 400 - 700MM
HEIGHT: 400 - 800MM
THICKNESS: 8MM



DORTMUND SHELF

MATERIAL TYPE: TEMPERED EUROBRONZE GLASS

WIDTH: 400 - 700MM
DEPTH: 400 - 700MM
HEIGHT: 400 - 800MM
THICKNESS: 8MM



GRAND-PRIX TABLE

MATERIAL TYPE: TEMPERED EUROBRONZE GLASS

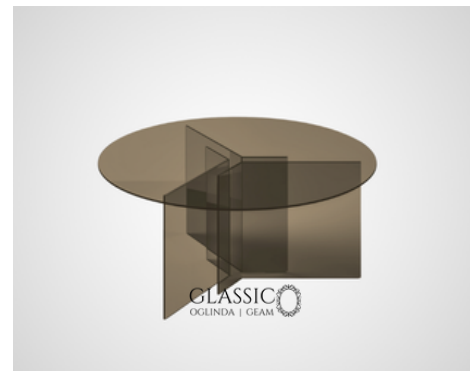
WIDTH: 900 - 1200MM
DEPTH: 400 - 600MM
HEIGHT: 300 - 400MM
THICKNESS: 8MM



PARIS TABLE

MATERIAL TYPE: TEMPERED EUROBRONZE GLASS

WIDTH: 900 - 1600MM
DEPTH: 600 - 900MM
HEIGHT: 700 - 800MM
THICKNESS: 8MM



CASABLANCA TABLE

MATERIAL TYPE: TEMPERED EUROBRONZE GLASS

DIA: 600 - 1000MM
HEIGHT: 400 - 700MM
THICKNESS: 8MM



LEYSIN TABLE

MATERIAL TYPE: TEMPERED EUROBRONZE GLASS

WIDTH: 900 - 1200MM
DEPTH: 400 - 600MM
HEIGHT: 300 - 400MM
THICKNESS: 8MM